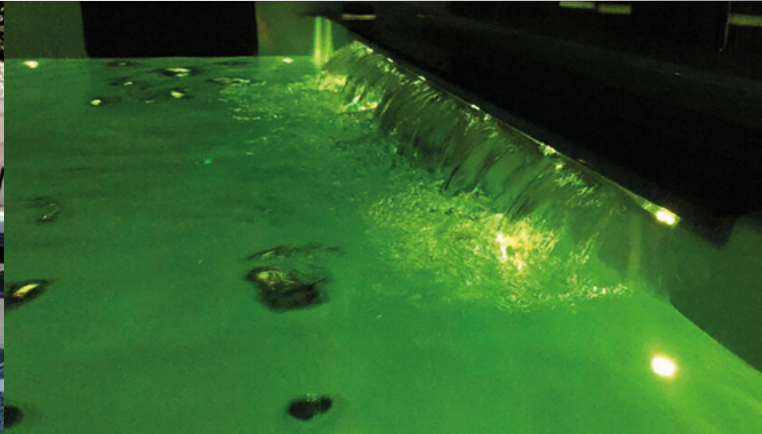


WHIRLPOOL NIZZA



DESIGN SERIE
MODELL DE800
220 X 220 X 96 cm



Ozonator

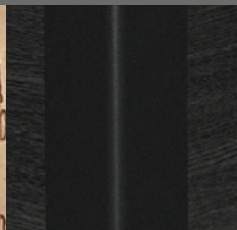
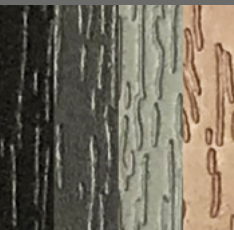
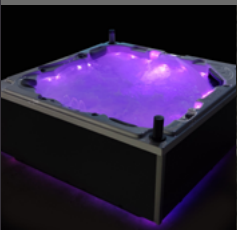
Spa Touch Display

Wave Design Wasserfall



LED Ambient Light

Standardverkleidung oder Aluminiumverkleidung

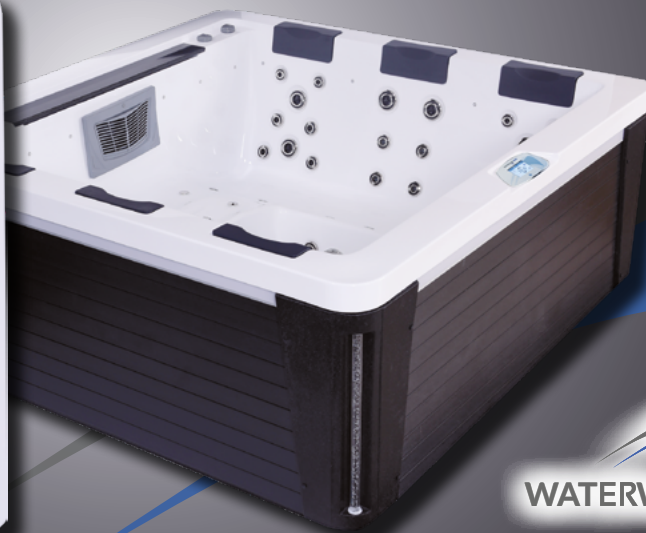


WATERWAVE SPAS®

www.waterwave-spas.com



WHIRLPOOL NIZZA DESIGN SERIE



TECHNISCHE DATEN

Maße:	220 x 220 x 96 cm
Leergewicht:	350 kg
Wasserkapazität:	1.500 l
Gesamtgewicht:	1.850 kg
Verkleidungsfarbe:	siehe Übersicht
Wannenfarbe:	siehe Übersicht
Verkleidung:	Aluminium oder Standardverkleidung

DETAILS

Sitzplätze:	4
Liegeplätze:	1
Wasserdüsen:	54
Isolierung:	Extrem Isolation
Rahmen:	Edelstahlrahmen
Steuerung:	Balboa
Bedienfeld:	SpaTouch
Wasserpumpe:	1 x 3 PS 2-stufig + 2 x 3 PS 1-stufig
Zirkulationspumpe:	Silent Wave Eco
Ozonator:	inklusive
UV Desinfektion:	inklusive
Filter:	2 x 50 sq Ft.
Wasserablass:	inklusive
Heizung:	3 KW Balboa
Elektrische Anforderungen:	3 Phasen 20 Ampere, 400 Volt

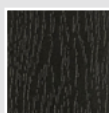
LED BELEUCHTUNG

LED Ambient Light:	optional
LED Wasserlinie:	inklusive
Wasserfall:	Wave Design
LED Unterwasserscheinwerfer:	inklusive

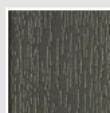
OPTIONAL

- Airblower (Luftpumpe mit bis zu 16 zusätzlichen Luftdüsen und Aromatherapie, je nach Modell)
- Waterwave Select Cabinet
- Waterwave Sound System
- WiFi Control System
- Waterwave Clear Saltsystem
- Vorbereitung externer Zugang (Bsp. Luft/Wärmepumpe)

VERKLEIDUNGSFARBEN STANDARD



Black



Dark Grey

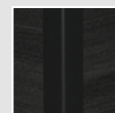


Light Grey



Dark Brown

ALUMINIUM VERKLEIDUNG



Design Grey

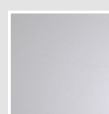
WANNENFARBEN



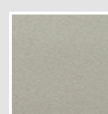
Pure White



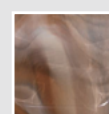
Silver Marble



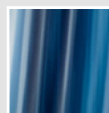
White Pearl



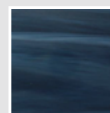
Gypsum



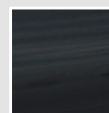
Mediterr. Sunset



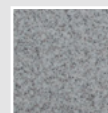
Ocean Wave



Summer Sapphire



Midnight Opal



Sahara